

*Peterhof the most popular building in St. Petersburg. There are a lot of fountains. Peterhof was Peter's palace. It is the place which you can relax watching the culture.*

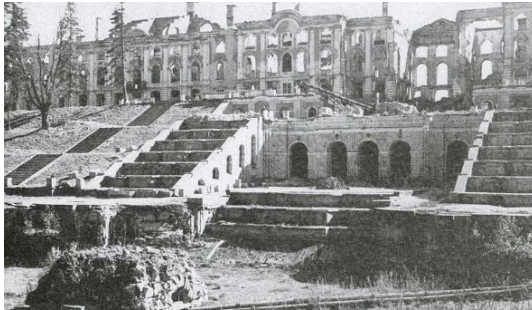


*A lot of people say that Peterhof is the place of luxury. And it is true. They are 176 fountains and 4 cascades.*

*Peterhof in 1918.*



*Peterhof in 1944.*

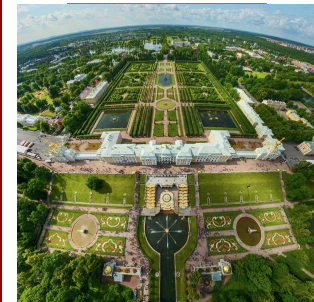


*Peterhof in 2014.*



Wikipedia, [peterhofmuseum.ru](http://peterhofmuseum.ru)  
[museum.ru](http://museum.ru)

## *Peterhof*



Petrova Nastya,  
7 "D"  
educational  
centre "Gazprom"



## History

They are a lot of holidays which you can visit.

Peter I designed Peterhof in 1714.

In 1723 Peterhof was opened for visitors.

Also there are many museums: the museum of families Benya, museum of collectors, card plays and others.

There are a lot of fountains and museums:

- Big cascade
- Samson fountain
- Favourite fountain
- Lion's cascade
- Menazherny fountains
- Cascade Gold mountain
- Hermitage pavilion
- Top Garden
- And others



### Big cascade

The big cascade is the main fountain of Peterhof. It is most popular cascade in St. Petersburg.



### Samson fountain

It is the biggest fountain of the Big cascade, height of its stream reaches 21 meters. It is gold fountain in the centre.



### Favourite fountain

There are a lot of toys: dogs, ducks and others. People like this fountain because it is nice and animals are good.



### Lion's cascade

The lion's cascade is very beautiful. There is a statue in a centre.



### Menazherny fountains

Menazherny fountains received the name from the French word "menager" that means "to save" and "protect".



### Cascade Gold mountain

The cascade the Gold mountain received the name because of gloss of gilded steps.



### Hermitage pavilion

The word the Hermitage in translation from the French ermitage is meant by a "privacy place".



### Top Garden

In Peterhof there are two parks - lower and top. but I will tell you only about the top park. The top Garden is located between Sankt-Peterburgsky Avenue and Big Palace. Usually the visitors who came by the bus originally get exactly here.

In Peterhof there are two parks - lower and top. but I will tell you only about the top park. The top Garden is located between Sankt-Peterburgsky Avenue and Big Palace. Usually the visitors who came by the bus originally get exactly here.

